

Project Portfolio of **105** MW to build on Wind Plants in Italy Region of Campania “ **BENEVENTO** ”

A safe and high return investment !

1



Benevento Data

2

BENEVENTO DATA

Country	Italy
Region	Campania
Type	Province
ISO 3166-2	IT-BN
NUTS	ITF32
HASC	IT.BN
Cities and villages	78
Number of inhabitants	287,874 inhabitants Benevento <i>62,035 inhabitants</i> Ginestra degli Schiavoni <i>526 inhabitants</i>
Area	2,071 km ² (799.47 sq mi) Benevento <i>130 km²</i> San Nazzaro <i>2.0 km²</i>
Population Density	139.0 /km ² (360.1 /sq mi) Telesse Terme <i>715 /km²</i> Pietraroja <i>16.9 /km²</i>
Average altitude	395 m (1,294 ft)



A safe and high return investment !



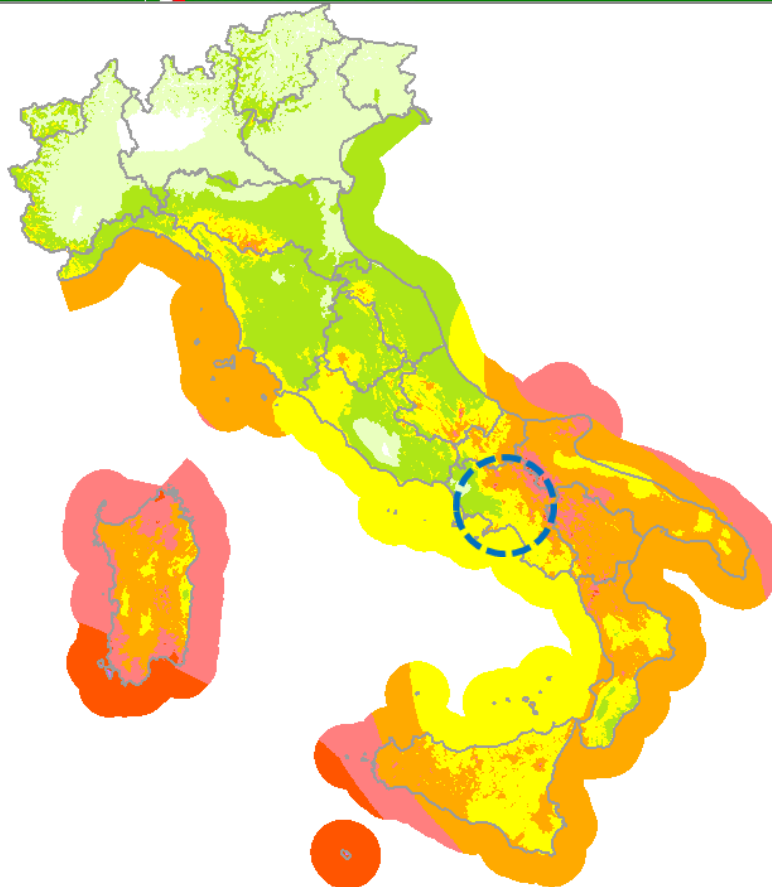
Annual mean wind speed at 75m

4

ATLANTE EOLICO INTERATTIVO

INTERACTIVE WIND ATLAS

MANUALE D'USO | LINEE GUIDA REGIONALI | DESCRIZIONE E APPROFONDIMENTO



**Velocita' media annua
del vento a 75m
s.l.t./s.l.m.
(Annual mean wind
speed at 75m
a.t.l./a.s.l.)**

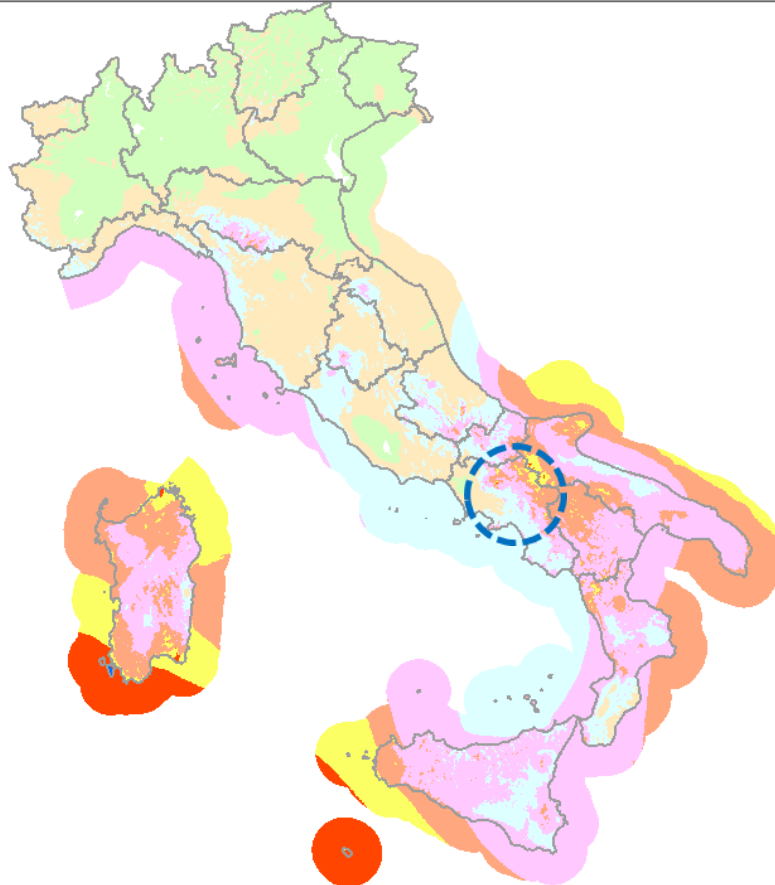


Annual energy production at 75m

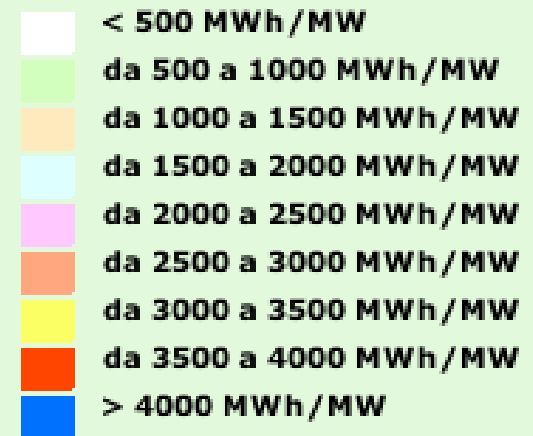
5

ATLANTE EOLICO INTERATTIVO INTERACTIVE WIND ATLAS

MANUALE D'USO LINEE GUIDA REGIONALI DESCRIZIONE E APPROFONDIMENTO



**Producibilita'
specifica a 75m
s.l.t./s.l.m.
(Specific annual
energy production at
75m a.t.l./a.s.l.)**

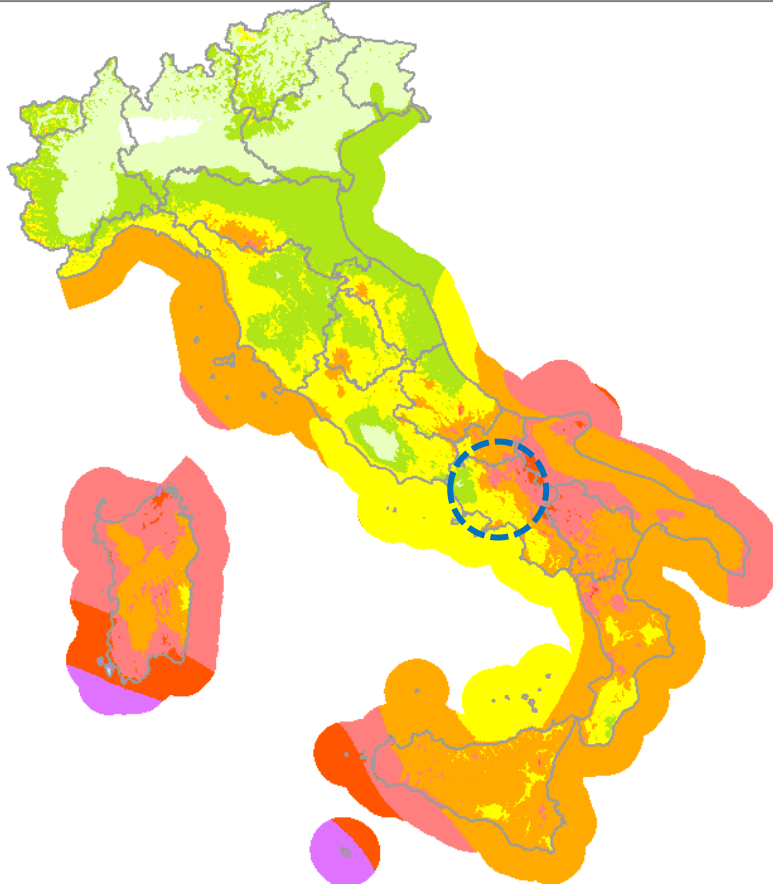


Annual mean wind speed at 100m

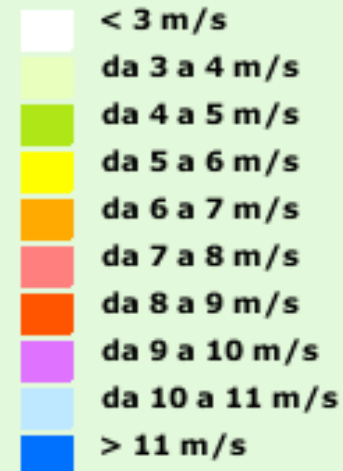
6

ATLANTE EOLICO INTERATTIVO INTERACTIVE WIND ATLAS

MANUALE D'USO LINEE GUIDA REGIONALI DESCRIZIONE E APPROFONDIMENTO



**Velocita' media annua
del vento a 100m
s.l.t./s.l.m.
(Annual mean wind
speed at 100m
a.t.l./a.s.l.)**

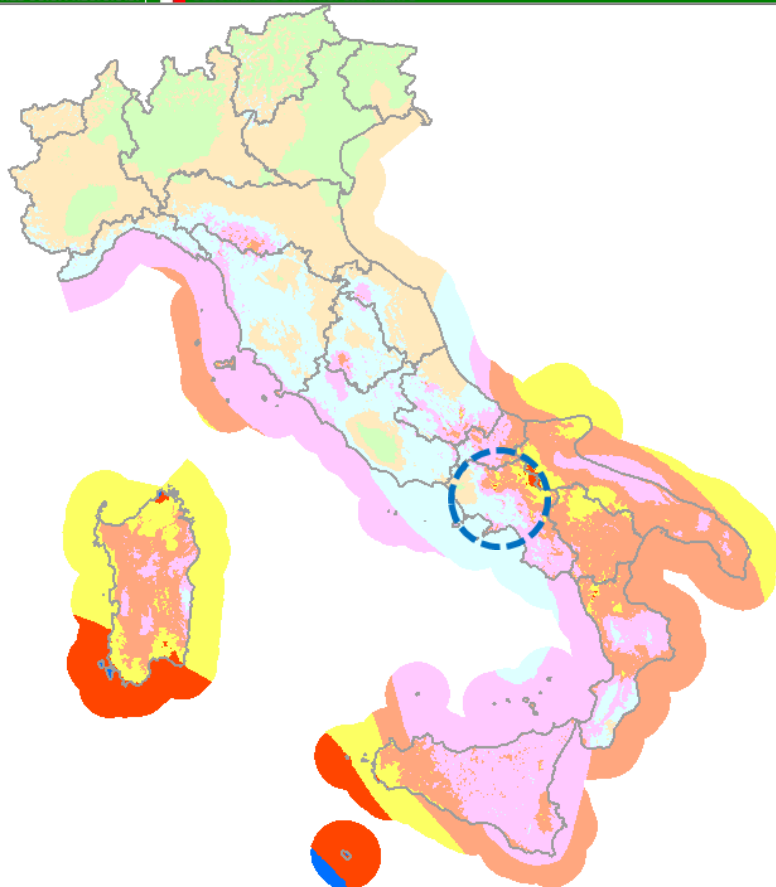


Annual energy production at 100m

7

ATLANTE EOLICO INTERATTIVO INTERACTIVE WIND ATLAS

MANUALE D'USO LINEE GUIDA REGIONALI DESCRIZIONE E APPROFONDIMENTO



**Producibilita'
specifica a 100m
s.l.t./s.l.m.
(Specific annual
energy production at
100m a.t.l./a.s.l.)**



Benevento Data

8

Benevento

Province of Benevento, Region Campania, Italy

The Locality: Benevento, the capital of the province of the same name, is situated on a hill 400 ft. above sea-level at the confluence of the Calore and Sabato rivers, on the site of the ancient Beneventum, originally Maleventum or more correctly Maloeis (derived from the Greek word for apple malon). The legend says that it was founded by Diomedes after the Trojan War.

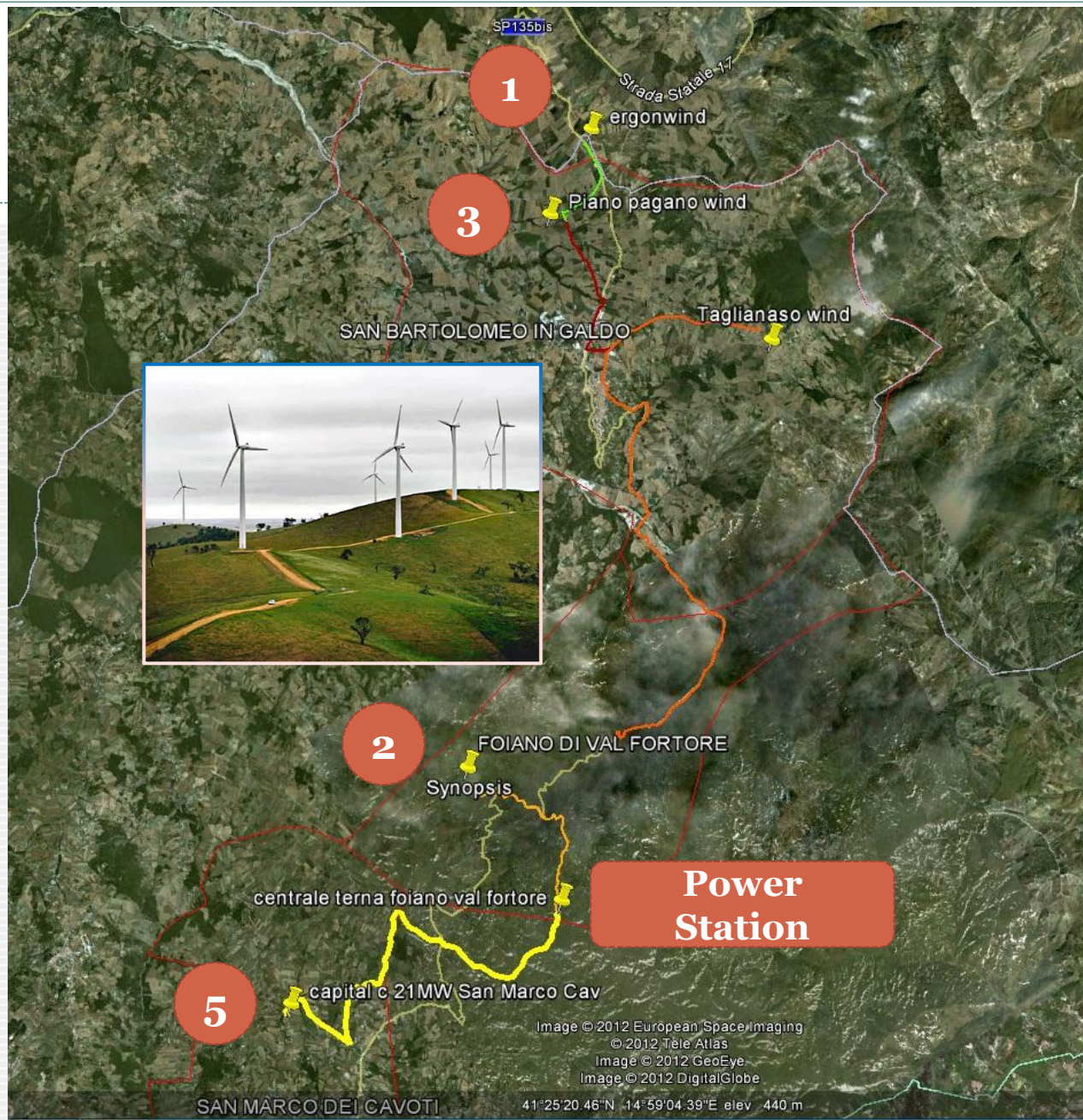
▶ BENEVENTO GEOGRAPHY

Benevento Geographical coordinates	Latitude: 41.1304 , Longitude: 14.7812 41° 7' 49" North, 14° 46' 52" East
Benevento Area	12,996 hectares 129.96 km ² (50.18 sq mi)
Benevento Altitude	Minimum 83 m Maximum 499 m <i>Average 291 m</i>
Benevento Climate	Mediterranean climate (Köppen climate classification: Csa)

Situation on Map of Italy

9





Situation on Map

Information

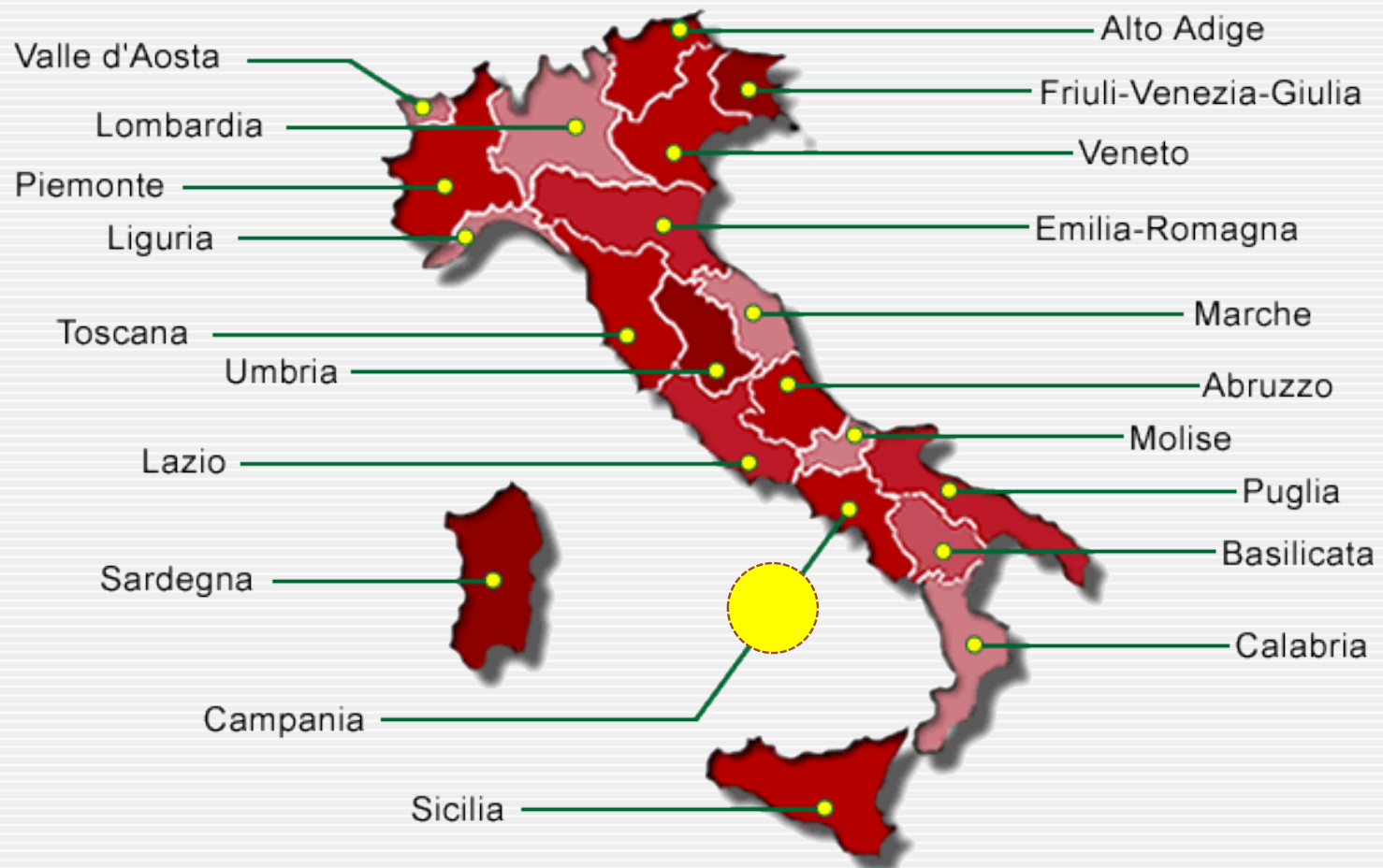


Italy have a FiT scheme that is established .



The Italian Regions

12



Campania Region

13



Data sheet for business development 48MW

14

1

Region : CAMPANIA

Province : Benevento

Municipality : SAN BARTOLOMEO IN GALDO LOCALITA' Park TAGLIANASO

WIND ASSESSMENT

Wind Park Capacity : 48MW

N. Of turbines : 16

Wind Turbine Capacity : 3MW

Hub Height : 105 MT

Rotor Diameter : 90 MT

Wind Turbine model : VESTAS V90

Mean Speed : 7 m/s

WEATHER CONDITIONS

48MW

15

1

Roughness map : no roughness

Sheltering obstacles : There aren't obstacles to wind farm

LAND CONDITIONS

Location of the facilities : Alt. 770 m slm

Distance from the nearest seaport : Manfredonia 87 km and Salerno 126 km

Orographic map : site not completely flat

GRID CONNECTION

STMG/STMD : power station of 150 kV “ FOIANO “

Distance : 5.000m from the park

Substation existing or to build : to build

MEAN TECHNICAL FEATURES

Estimated Equivalent Running Hours (P75) : 2600

48MW

16

1

Grid connection Status : connection request made to Terna SPA

STMG technical characteristics : The phase agreement for resolving the link to the new substation HV/MV is to be carried out with the station (150 kV FOIANO) .

Road conditions : excellent

WIND ASSESSMENT

Productivity Certification / Euroservice

Certification company name : Euroservice

AUTHORIZATION PROCESS

N. Of involved municipalities : 1

Distance from the city center / Over 2 Km

Land property or Lease : Lease Agreement for an amount of € 4,000,00 / MW
ANNUAL AND RIGHT OF SURFACE WITH AN AMOUNT OF € 2,00 / sqm for
the wind turbine stands

48MW

17

1

Status of the environmental authorization process : convened the first conference services and pending advice

Estimated date for obtaining the single authorization : **30/12/2023**

Agreement with the Municipality : at conclusion

Data sheet for business development 36MW

18

2

Region : CAMPANIA

Province : Benevento

Municipality : SAN BARTOLOMEO IN GALDO LOCALITA' Park PIANO PAGANO

WIND ASSESSMENT

Wind Park Capacity : 36 MW

N. Of turbines : 12

Wind Turbine Capacity : 3 MW

Hub Heigt : 105 MT

Rotor Diameter : 90 MT

Wind Turbine model : VESTAS V90

MEAN Speed : 7 m/s

WEATHER CONDITIONS

36MW

19

2

Roughness map : no roughness

Sheltering obstacles : There aren't obstacles to wind farm

LAND CONDITIONS

Location of the facilities : Alt. 770 m slm

Distance from the nearest seaport : Manfredonia 87 km and Salerno 126 km

Orographic map : site almost completely flat

GRID CONNECTION

STMG/STMD : power station of 150 kV “ Ariano Irpino “

Distance : 10.000m from the park

Substation existing or to build : to build

MAIN TECHNICAL FEATURES

Estimated Equivalent Running Hours (P75) : 2400

36MW

20

2

Grid connection Status : Connection request made to Terna SPA

STMG technical characteristics : The phase agreement for resolving the link to the new substation HV/MV is to be carried out with the future Substation (150 kV Ariano Irpino) .

Road conditions : excellent

WIND ASSESSMENT

Productivity Certification : Euroservice

Certification company name : Euroservice

AUTHORIZATION PROCESS

N. Of involved municipalities : 1

Distance from the city center : Over 1,5 km

Land property or Lease : Lease Agreement for an amount of € 4,000,00 / MW
ANNUAL AND RIGHT OF SURFACE WITH AN AMOUNT OF € 2,00 / sqm for the wind turbine stands .

36MW

21

2

Status of the environmental authorization process : convened the first conference and services pending advice

Estimated date for obtaining the single authorization : **30/12/2023**

Agreement with the Municipality : at conclusion

Data sheet for business development **21MW**

22

3

Region : CAMPANIA

Province : Benevento

Municipality : SAN MARCO DEI CAVOTI Park San Rocco

WIND ASSESSMENT

Wind Park Capacity : 21 MW

N. Of turbines 7

Wind Turbine Capacity : 3 MW

Hub Height : 105 MT

Rotor Diameter : 90 MT

Wind Turbine model : VESTAS V90

Mean Speed : 7 m/s

WEATHER CONDITIONS

Roughness map : no roughness

Sheltering obstacles : There aren't obstacles to wind farm

LAND CONDITIONS

Georeferenced Location of the facilities in coordinates UTM WGS84: 4574852,16 N ; 489735,38 E Alt. 729 m slm

Distance from the nearest seaport : Salerno 100 km

Orographic map : site almost completely flat

GRID CONNECTION

STMG/STMD : power station of 150 kV rtn to be unrelated to enter the line-out to “ Foiano “

Distance : 2.000m from the park

Substation existing or to build : to build

21MW

24

3

MAIN TECHNICAL FEATURES

Estimated Equivalent Running Hours (P75) : 2300

Grid connection Status: Connection request made to Terna SPA

STMG technical characteristics : The phase agreement for resolving the link to the new substation HV/MV is to be carried out with future Substation (150 kV Foiano) .

Road conditions : excellent

WIND ASSESSMENT

Productivity certification : Euroservice

Certification company name : Euroservice

AUTHORIZATION PROCESS

N. Of involved municipalities : 1

21MW

25

3

Distance from the city center : Over 2 km

Estimated date for obtaining the single authorization : **30/12/2023**

Agreement with the Municipality : at conclusion

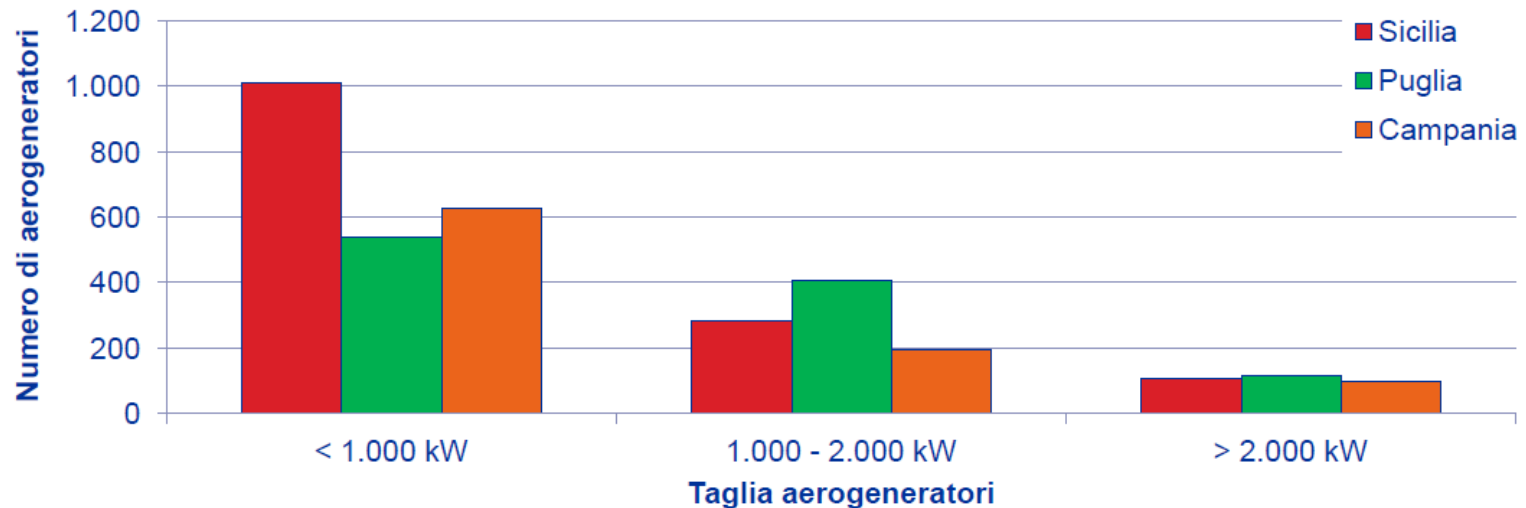
Land property or Lease : Lease Agreement for on amount of € 4,000,00 / MW
ANNUAL AND RIGHT OF SURFACE WITH AN AMOUNT OF € 2,00 / sqm for
the wind turbine stands

Status of the environmental authorization process : convened the first conference
services and pending advice

The Italian market and their size on turbines

26

► *Taglia delle turbine nei siti ad alta ventosità*

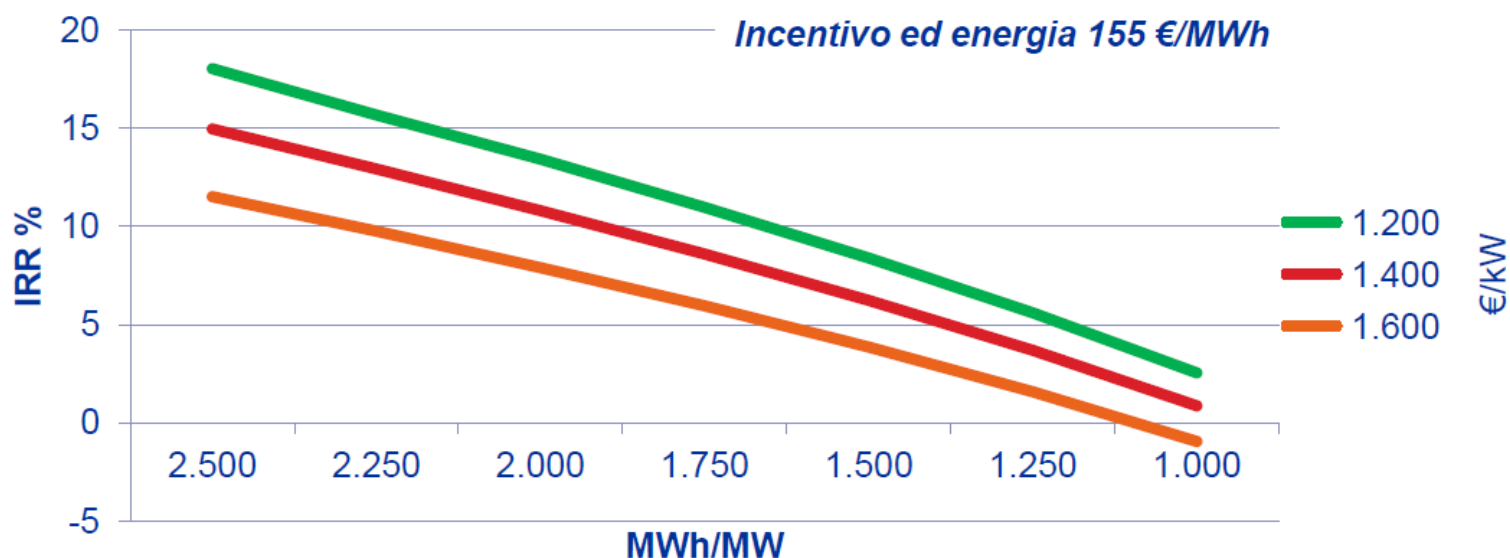


Se si analizzano la tipologia di installazione nelle Regioni con maggiore ventosità è possibile notare maggiormente il fenomeno dell'arretratezza del parco impianti italiano

The remunerativeness of investment in Italy

27

► La redditività degli investimenti in Italia



L'extra-costo di installazione causa un differenziale di redditività stimabile in 3 punti percentuale di IRR

The new instruments for Feed-in Tariff

28

- Nuovi strumenti di incentivazione:

Tipologia impianti	Taglia	Tipologia incentivi
Micro-impianti	< 60 kW	Incentivazione diretta
Piccoli impianti	60 kW – 5 MW	Registro Piccoli Impianti
Grandi impianti	> 5 MW	Asta

Auction



REGIONE CAMPANIA

